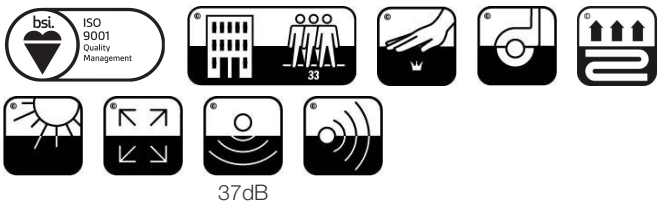
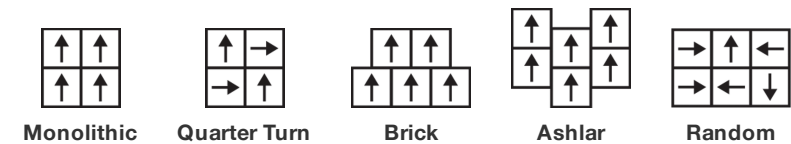


Numéro Du Style	C040W	
Collection	Floor Architecture III	
Type De Produit	Dalles De Moquette	
Construction	Standard	Data + Performance
Type De Fabrication	ISO 2424	tufted 1/10" 39.4 per 10cm
Construction	ISO 2424	Tufté Structuré Bouclé à Motif
Méthode De Coloration	EN 994	100% Solution Teinte
Dimensions Du Produit	EN 994	50 cm x 50 cm 16 tiles (4 m²) per box
Sous-couche Primaire	ISO 2424	Pet Non-Woven
Sous-couche Secondaire	ISO 2424	Comfortworx® Tile La Couche Matrix Pad Contient 90 % De Contenu Recyclé
Fibre	ISO 2424	Ecosolution Q® Polyamide 6
Epaisseur Du Velours	ISO 1765	11.1 mm
Épaisseur Du Velours Fini	ISO 1766	2.8 mm
Poids Total	ISO 8543	4069 g/m²
Poids Tufté	ISO 2424	630 g/m²
Poids Du Velours Utile	ISO 8543	308 g/m²
Densité Du Velours	ISO 8543	0.109 g/cm³
Données		
Points	ISO 1763	165,000/m² 42 per 10cm
Propension Electrostatique	ISO 6356	≤ 2.0 kv (Stroll Test)
Classification d'Utilisation	EN 1307	33 Commercial Heavy
Classification Luxe	EN 1307	LC1
Stabilité Dimensionnelle	EN 986	≤ 0.2%
Isolation Acoustique	ISO 10140	37db
Classification d'Absorption Sonore	ISO 354/11654	0.30 Aw Class D
Résistance Thermique m² K/w	ISO 8302	0.179 M² K/W Tog 1.79
Dry Slip Resistance	ISO 13893	Pass / No Pulled Loops
Résistance De La Couleur À La Lumière	ISO 105-B02	>6
Inflammabilité	EN 13501-1	Bfl-S1 (Adhered Testing)
Chaise À Roulette	EN 985	≥2.4 Continuous USE
Limitée Commerciale De 15 Ans subject to installation in full accordance with manufacturer's instructions and a regular effective cleaning and maintenance programme.		

Méthodes d'Installation Conseillées



Coordination Des Produits

Carpet Tile: **Stone Comfortworx® Tile, Fragment Comfortworx® Tile, Formation Colours Comfortworx® Tile, Fragment Colours Comfortworx® Tile, Formation Comfortworx® Tile, Fragment Taskworx® Tile, Stone Taskworx® Tile, Formation Colours Ecoworx S Tile, Fragment Colours Ecoworx S Tile, Formation Colours Taskworx® Tile, Fragment Colours Taskworx® Tile, Fragment Ecoworx S Tile, Stone Ecoworx S Tile, Formation Taskworx® Tile, Formation Ecoworx S Tile, Stone Colours Taskworx® Tile, Stone Colours Ecoworx® S Tile**

Attributs + Certifications

Déclaration environnementale de produit (EPD)	Certifié Par Un Organisme Tiers Conformément Aux Normes ISO14044, ISO 14025 & EN15804
garantie environnementale	Take Back Policy Offered For All Comfortworx Products
ISO 9001	Certifié
pays d'origine	United Kingdom
BREEAM Contribution Credit	Certificate of Approval Schools/Offices/Health/Industrial Shed Retail

Well V2 Contribution Credit

X11 Long Term Emissions Control Part 2: Flooring Optimization	M1> Emissions Class For Building Material
--	---

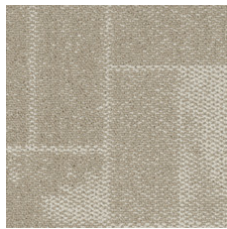
Contribution À La Certification Leed

MR Credit: Building Product Disclosure and Optimisation Environmental Product Declarations - Option 1: Environmental Product Declaration (EPD)	3rd Party Certified in Accordance with ISO14044, ISO14025 & EN15804
MR Credit: Building Product Disclosure and Optimisation Material Ingredients - Option 1: Material Ingredient Reporting	HPD (Version 2.1)
"Crédit EQ : matériaux faibles émissions Option 1 : calculs par catégorie de produit"	Certified

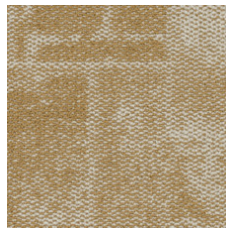
Memberships

WGBC Framework	WGBC Framework
UKGBC	UKGBC
Emirates Green Building Council	Emirates Green Building Council
Chemsec	Chemsec

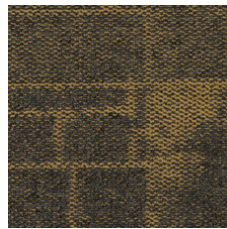
Indice De Réflexion Lumineuse



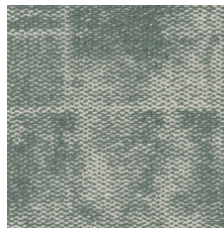
Oatmeal 04111
LRV 31.9



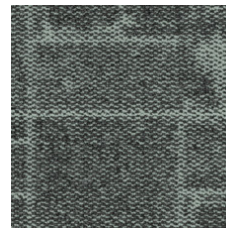
Brushed Gold 04210
LRV 24.6



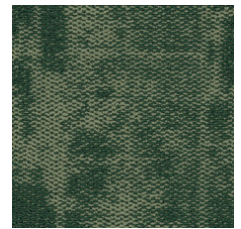
Midnight Brushed 04211
LRV 8.1



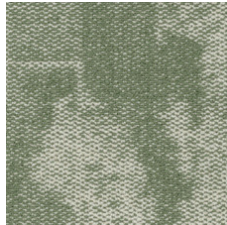
Mineral 04327
LRV 22.9



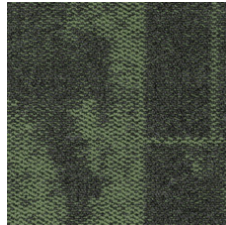
Midnight Mineral 04328
LRV 12.5



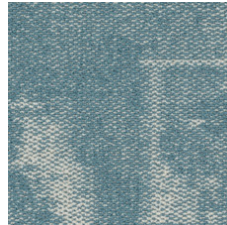
Racing Green 04334
LRV 6.2



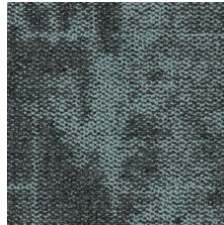
Sage 04375
LRV 22.3



Midnight Sage 04376
LRV 7.5



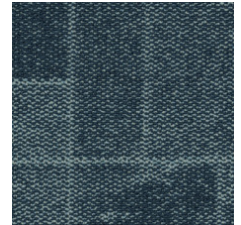
Sky 04411
LRV 24.9



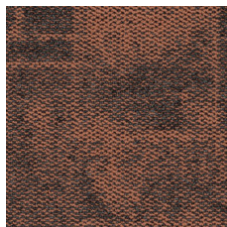
Midnight Sky 04412
LRV 9.6



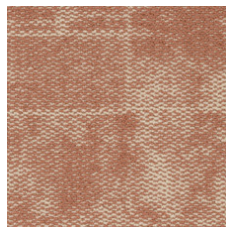
Steel Blue 04447



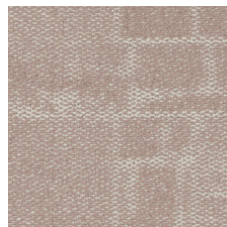
Denim 04486
LRV 10



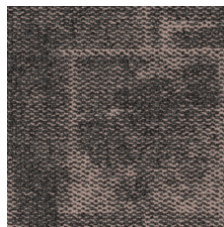
Midnight Apricot 04674
LRV 7.8



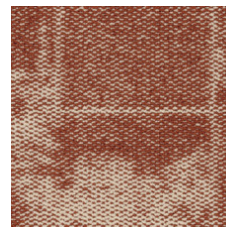
Apricot 04675
LRV 23.4



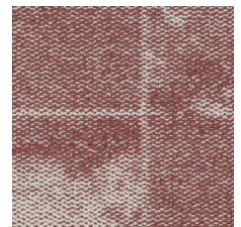
Powder Pink 04800
LRV 30.1



Midnight Powder 04801
LRV 11.4



Copper 04865
LRV 18.9



Rosewood 04870
LRV 18.8

Informations Supplémentaires

**Manufactured in ISO 9001 certified facility. Meets or exceeds all local and national regulations in country of manufacture.

[Installation Guidelines](#)

[Limitée commerciale de 15 ans](#)

Specifications are subject to nominal manufacturing variance. Material supply and/or manufacturing processes may necessitate changes without notice.

This product is an exclusive design and may not be duplicated in any manner. Use of this design in the creation of another product design is also strictly prohibited.

Visit shawcontract.com/testing for more information.



Corporate Headquarters +1 800 257 7429 | +1 706 532 7984 | Atlanta +1 404 853 7429 | Bengaluru +91 80 6773 0202 | Beijing +86 10 6568 588 | Chicago +1 312 467 1331 | Dubai +971 4 584 6956 | Hong Kong +852 2623 0371 | Latin America (Miami) +1 305 827 5912 | London +44 207 961 4120 | Los Angeles +1 800 233 1614 | Melbourne +61 3 9939 8543 | Mexico City +55 5010 7600 | Mumbai +91 22 6284 5050 | Nantong +86 400 800 7429 | New York +1 212 953 7429 | Paris +33 (0) 1 81 22 44 39 | San Francisco +1 415 955 1920 | Santiago +562 2431 5000 x 550 | São Paulo +55 11 3071 1702 | Shanghai +86 21 3338 4000 | Singapore +65 6733 1811 | Sydney +1 800 556 302

© 2024 Shaw Industries Group, Inc., a Berkshire Hathaway Company
May 20, 2024

3 of 3